



Issue: 2.9

Date: 1st Oct 2008

Firmware: V8.0.x

FGD14 Single Channel Environmental Monitor, Premier Infrared Sensor.

STATUS SCIENTIFIC CONTROLS LTD.
Hermitage Lane Industrial Estate,
Kings Mill Way,
Mansfield,
Nottinghamshire.
NG18 5ER
England
Tel : 01623 651381
Fax : 01623 421063
Internet : www.status-scientific.com

STATUS SCIENTIFIC CONTROLS

FGD14 Environmental Monitor
Premier Infrared Sensor



1	Introduction	3
1.1	SENSORS.....	3
2	Installation	4
2.1	SITING THE 'FGD14'.....	4
2.2	POWER SUPPLY OPTIONS.....	4
2.2.1	<i>Mains Powered</i>	4
2.2.2	<i>DC Powered</i>	4
2.3	WIRE TERMINATION.....	5
2.3.1	<i>Remote Indicator Connection</i>	6
3	Menu System	7
3.1	DISPLAY UNIT.....	7
3.2	MENU MODE SELECTION.....	8
3.3	ALARM TEST.....	9
3.4	CALIBRATION.....	9
3.4.1	<i>Calibration Gas Flow Rates</i>	9
3.4.2	<i>Zero</i>	10
3.4.3	<i>Span</i>	12
3.4.4	<i>Set Instrument FSD</i>	14
3.4.5	<i>Set Display Mode</i>	14
3.4.6	<i>Display Firmware Version</i>	15
3.4.7	<i>Restore</i>	15
3.4.8	<i>View Engineer/Diagnostics Data</i>	16
3.4.9	<i>Sensor Frequency</i>	16
3.4.10	<i>Cross Reference</i>	16
3.4.11	<i>Set Relay 1 Mode</i>	17
3.4.12	<i>Set Relay 2 Mode</i>	17
3.4.13	<i>Set Alarm Level 1</i>	18
3.4.14	<i>Set Alarm Level 2</i>	18
3.4.15	<i>Sounder Enable</i>	18
3.4.16	<i>Set Alarm Hysteresis</i>	19
3.5	'FGD14' INDICATIONS.....	20
3.6	SENSOR REPLACEMENT.....	22
4	Trouble Shooting	23
5	PC Communications Software	24
5.1	SOFTWARE INSTALLATION.....	24
5.2	PC SOFTWARE.....	24
5.2.1	<i>Comm port selection</i>	25
5.3	READ CONFIGURATION DATA.....	26
5.3.1	<i>Configuration data</i>	27
5.4	WRITE CONFIGURATION DATA.....	28
5.4.1	<i>Configuration write warnings</i>	28



7 SPECIFICATION

Size	: 122 x 142 x 75mm nominal
Weight	: 0.9Kg
Gas Types	: Carbon Dioxide
Operating Voltage	: 85-265V, 47-400 Hz
Alarm set points	: 2 user adjustable set points between 0.0%v/v and sensor FSD (5%v/v).
Alarm output	: Voltage free, single pole changeover relay contacts. User selectable for either normally energised or normally de-energised operation
Alarm contact rating	: 1A, 30Vd.c. non-inductive load
Visual alarm indication	: Flashing red LED on front panel and on remote indicator unit
Audible alarm indication	: Intermittent alarm tone on front panel and on remote indicator unit
Sensor Type	: NDIR Infra red, temperature compensated, dual element
Measurement range	: 0-5% Vol
Response Time	: $T_{90} < 40$ sec
Measurement Resolution	: 0.025% Vol
Sensor MTBF	: 10 years
Operating Temperature	: -10 to +40 °C
Storage Temperature	: -20 to +50°C
Humidity Range	: 0 to 95% RH non-condensing
Operating Pressure	: Ambient + or - 10%

5.5	LIVE DATA	29
5.6	DATA LOGGING	30
5.6.1	File selection	30
5.6.2	Logging Interval	31
5.6.3	Start data logging	31
5.6.4	Stop data logging	32
5.6.5	File Viewing	32
5.6.6	File Printing	33
5.7	REPROGRAMMING	34
5.7.1	File selection	34
5.7.2	Firmware update	35
6	Communications Hardware	36
7	Specification	37



1 INTRODUCTION

This variant of the manual is specifically for the FGD14 fitted with a Premier Infrared sensor.

The FGD14 is a self-contained unit designed to detect environmental conditions by fitting suitable sensors. It also provides the user with local and remote indication of alarm / fault conditions.

The FGD14 can be fitted with a display unit that allows non-intrusive calibration / configuration via concealed push buttons and local readout of gas levels.

A remote keypad can be temporarily fitted to gain access to the calibration / configuration data when the unit is supplied without a display.

The FGD14 is fitted with two relays, which are linked to user definable alarm set points.

The FGD14 may be connected to an interface unit that will allow direct connection to a PC.

1.1 Sensors

This variant is fitted with a CO2 Premier infrared sensor. The sensor has on board linearization and temperature compensation over the range of -20 to +50 °C.

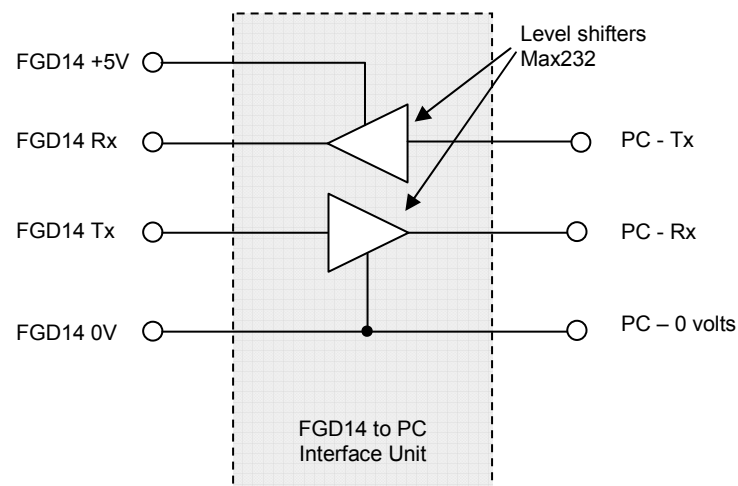
The sensor can be calibrated via two push buttons, one for zero and one for span.



6 COMMUNICATIONS HARDWARE

Serial communication is carried out by connecting the FGD14 to a PC via the RS232 comms port.

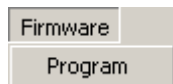
The signal levels from the FGD14 are at 0 and 5 volts and therefore must be converted to RS232 levels before connecting to a PC. The interface circuitry is as follows, see section 2.3.



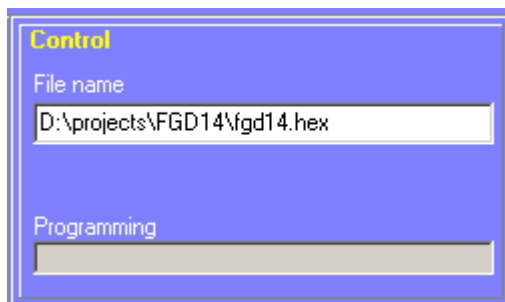


5.7.2 Firmware update

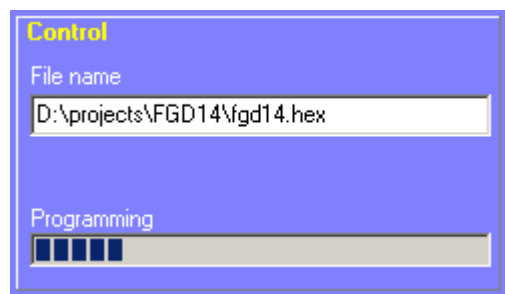
If the comm port has not been set up then refer to section 5.2.1. Now select **Firmware | Program** as follows:



The following screen will appear:



During programming a progress bar is updated indicating the programming progress.



At the end of the programming cycle, usually about 1 minute, the programming screen will close.

If the FGD14 module does not re-boot then switch off the power, wait for a few seconds, switch the power on.

2 INSTALLATION

IMPORTANT

It is important that the instrument has been installed and powered for a minimum of 10 minutes before it is used to monitor the gases concentration in the environment.

2.1 Siting the 'FGD14'

Mounting positions for detector heads need to be considered individually, some points for consideration are:

- Sensors for detecting gases that are lighter than air should be positioned at a high level.
- Sensors for detection of gases heavier than air should be located as low as practically possible.
- Ensure all sensors are mounted to allow calibration and maintenance to be carried out as required.
- Ensure the proposed site will not interfere with movement of existing equipment, e.g. cranes, doors etc
- Install all cables neatly and securely.
- Avoid siting the sensors adjacent to potential sources of radio frequency interference, e.g. radio transmitters, control switchgear, motors etc.
- Avoid mounting the instrument where it may be subjected to sudden transients in ambient temperature (e.g. above a heater/radiator).

2.2 Power Supply Options

The FGD14 is available with one of two power supply options.

2.2.1 Mains Powered

A universal power supply is fitted that operates in the range of 85-265Vac, 47-400 Hz. This allows worldwide use without the need to configure for location specific mains voltage requirements.

2.2.2 DC Powered

Alternatively a DC power supply can be installed capable of accepting voltages in the range of 8-30V DC.



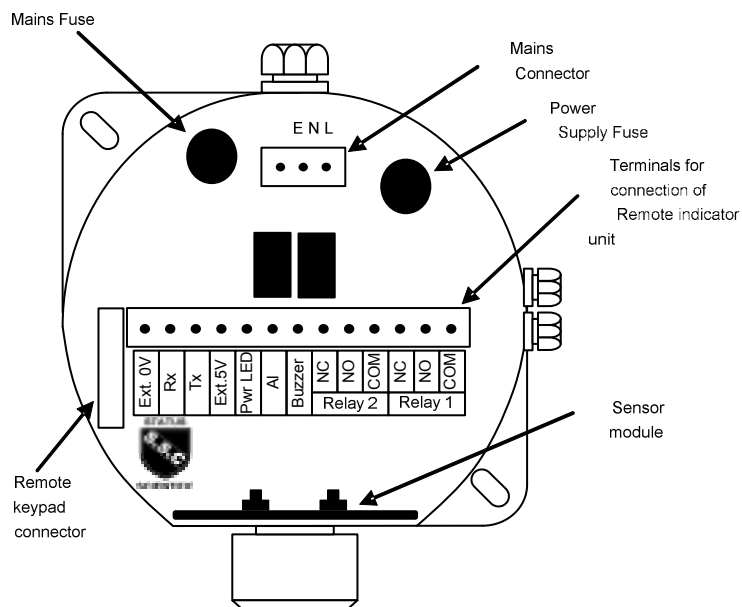
2.3 Wire Termination

All connections should be made according to the diagram below. It is advised that 'Bootlace Ferrules' or 'flat blade crimps' be used for tidy and reliable connections of wires into the Detector Head connectors.

Note: The yellow mains cover must be removed to gain access to the mains input connector.

Isolate the mains supply before removing cover.

Ensure that the protective cover is securely replaced after terminating the mains input



Note: When a DC Power Supply is fitted within the FGD14, the terminals marked L and N on the above diagram will be identified as +Ve and -Ve.



5.7 Reprogramming

From time to time it may be desirable to update the program stored within the FGD14 module. This can be carried out as follows:

The FGD module must be placed in the programming mode.

This is achieved as follows:

- 1) By pressing the left most button during the power-up time. When power has been applied the button can be released.
Note that the display will be blank.
- 2) Select Menu option **E:28** – see FGD module manual.
Note: the display will show Prog. Then press the MENU button, the display will show boot.

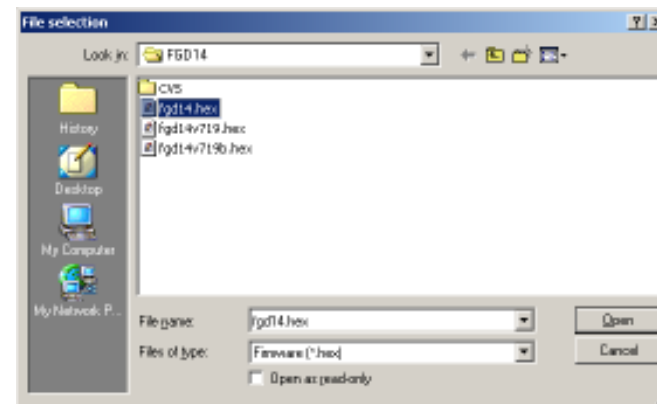
The user has to set up the file name and select a comm port before programming can commence.

5.7.1 File selection

The filename can be either entered directly in the File name text box or by selecting the file from a list using the **File | Open** facility, i.e.



The following screen will appear:



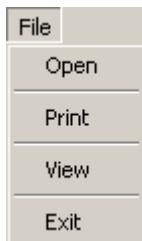
Select a path, folder then enter a file name.

Note: only files that end with the 'hex' extension are allowed.

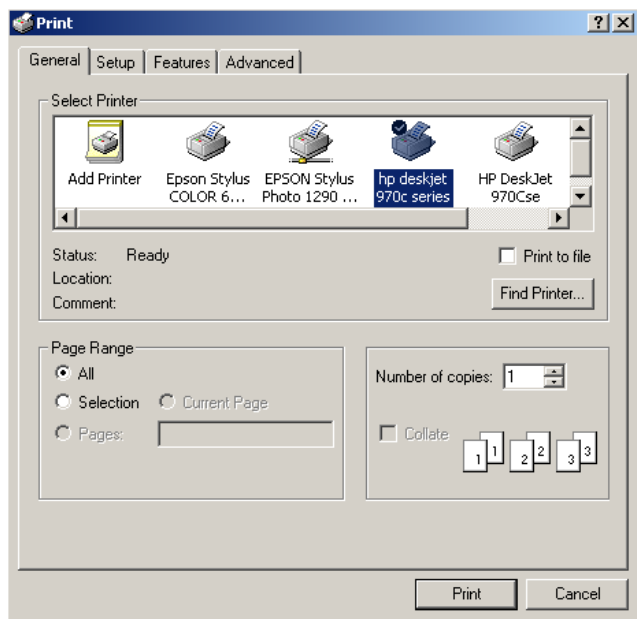


5.6.6 File Printing

The filename can be printed, after selection, by using the **File | Print** facility, i.e.



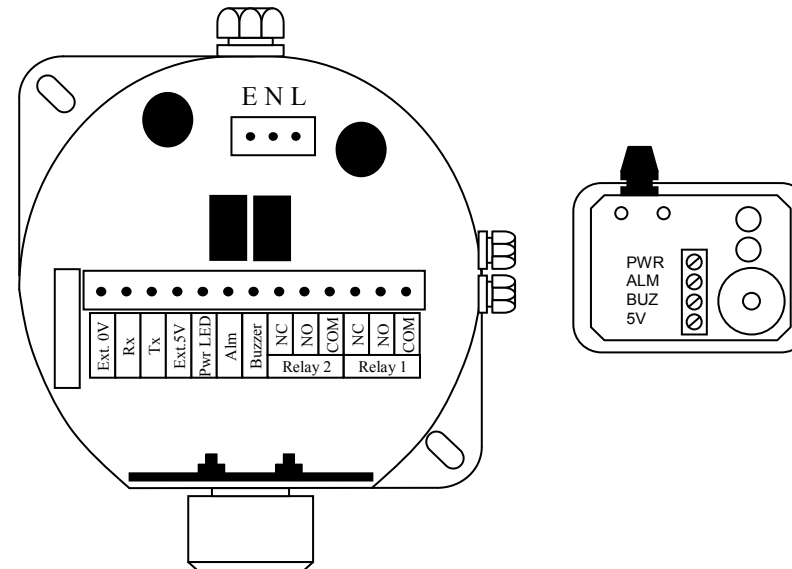
The following screen will appear:



Select the desired printer then click on Print.

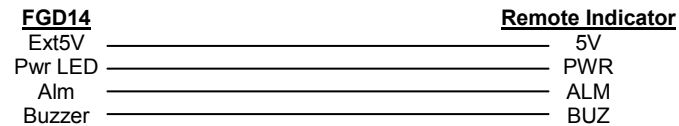


2.3.1 Remote Indicator Connection



To gain access to the terminals within the remote indicator assembly, remove the screw located at each corner of the assembly when viewed from below (4 in total).

The units should then be wired as follows:



A cable tie is provided within the remote indicator assembly to strain relieve the terminals.



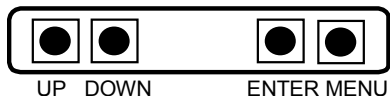
3 MENU SYSTEM

Important

Whenever the menu system is entered the instrument will cease to measure current gas levels. However normal operation is always returned following a period of keypad inactivity (or when the menu system is exited).

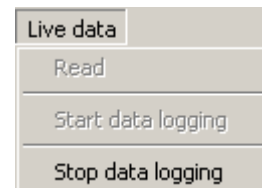
3.1 Display Unit

In order to gain access to the calibration switches and test points, release the screw situated between the letters A and T of the chrome STATUS label on the Detector Head front panel. The screw does not need to be completely removed, only release it far enough so that the STATUS label can rotate revealing the calibration switches. The buttons are designated as follows:



5.6.4 Stop data logging

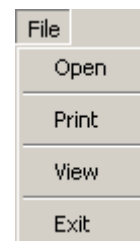
The data logging can be stopped at any time by selecting **Live data | Stop data logging**, as seen below:



At this point the data can be viewed, printed etc by opening the text file.

5.6.5 File Viewing

The filename can be viewed, after selection, by using the **File | View** facility, i.e.



The following screen will appear:

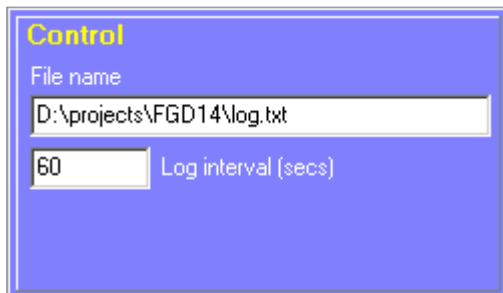
Date	Time	Reading TOX-5	Temp deg C	Alarm Status
08 October 2003	11:02:39	128	22.3	FSD LEVEL1 LEVEL2
08 October 2003	11:02:41	128	22.3	FSD LEVEL1 LEVEL2
08 October 2003	11:02:43	128	22.3	FSD LEVEL1 LEVEL2
08 October 2003	11:02:45	128	22.3	FSD LEVEL1 LEVEL2
08 October 2003	11:02:47	128	22.4	FSD LEVEL1 LEVEL2
08 October 2003	11:02:49	128	22.4	FSD LEVEL1 LEVEL2
08 October 2003	11:02:51	128	22.4	FSD LEVEL1 LEVEL2
08 October 2003	11:02:53	128	22.4	FSD LEVEL1 LEVEL2



If the file already exists then it will be overwritten with new data, all existing data will be lost.

5.6.2 Logging Interval

The Data logger can be set up to take readings at a pre-determined rate. The user can change the default setting of the log interval as seen below by clicking on the log interval box and entering a numerical value. The minimum time is 5 seconds.

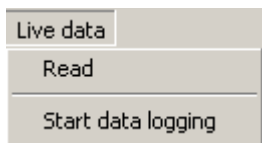


In this example a reading will be taken every 60 seconds and stored in the log.txt file

The logged data is stored as a simple tab delimited text file that can be imported into word processors and spread sheets for reports and analysis.

5.6.3 Start data logging

Once all the parameters have been set up the data logging can be initiated by selecting **Live Data | Start data logging**, as seen below:



3.2 Menu Mode Selection

Several calibration modes exist in the detector head and these are accessible via the instruments simple menu system. To select a calibration mode follow this procedure:

- Press the MENU button and **C: 1** appears on the display.
- Press UP or DOWN until the required calibration mode is displayed on the screen.
- Press ENTER to select the calibration mode.
- To exit the calibration mode press MENU.

While the instrument is in a calibration mode – any data displayed on the screen will alternate between the cal number and the reading.

The following features are available via the 'FGD14' menu system: -

Cal number	Function	Enabled	Section
1	Zero	Yes	3.4.2.1
2	Note: the Instrument zero must be carried out after a sensor zero. Span	Yes	3.4.3.1
3	IntroductionSet Instrument FSD	Yes	3.4.4
6	Set Display Mode	Yes	3.4.5
7	Display Firmware version	Yes	3.4.6
8	Restore	Yes	3.4.7
9	View Engineer/Diagnostics Data	Yes	3.4.8
10	Sensor Frequency	Yes	3.4.9
13	Set Relay 1 Mode	Yes	3.4.11
14	Set Relay 2 Mode	Yes	3.4.12
15	Set Alarm Level 1	Yes	3.4.13
16	Set Alarm Level 2	Yes	3.4.14
26	Sounder enable	Yes	3.4.15
27	Alarm hysteresis	Yes	3.4.16

Note: The MENU numbers have gaps, this is to maintain compatibility with other products that have different features.



3.3 Alarm Test

The FGD14 is equipped with an alarm test function. During alarm the relays, Leds and sounder will operate, see section 3.5

In order to gain access to the alarm test switch see section 3.1.

When the FGD14 is operating normally press the UP button to activate the alarm system. The alarm will continue to operate whilst the UP button is pressed and for a further 5 seconds when it is released.

3.4 Calibration

The infrared sensors used within the Status Scientific Controls 'FGD14' Detector Heads do not respond linearly with respect to gas levels to which they are exposed. The FGD firmware contains complex mathematical formulae to allow a linear response to be calculated and indicated on the instrument display.

Care should be taken to ensure that calibration procedures are followed and any notes included are read and understood. Failure to adhere with the recommendations within this manual may seriously impair the instruments ability to accurately indicate the gas levels to which it is being exposed.

3.4.1 Calibration Gas Flow Rates

Most gas sensors including the infrared sensors are sensitive to pressure transients and therefore it is important that the flow rate of gas into the sensor housing is not excessive during calibrations. Care must also be taken to ensure the exhaust from the sensor housing is not restricted. The recommended flow rate of calibration gases is 500 - 750cc/min.



5.6 Data Logging

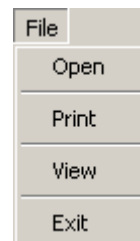
The data logging facility allows the user to monitor the sensors response over a period of time.

The user has to set up the parameters for logging to commence, these are:

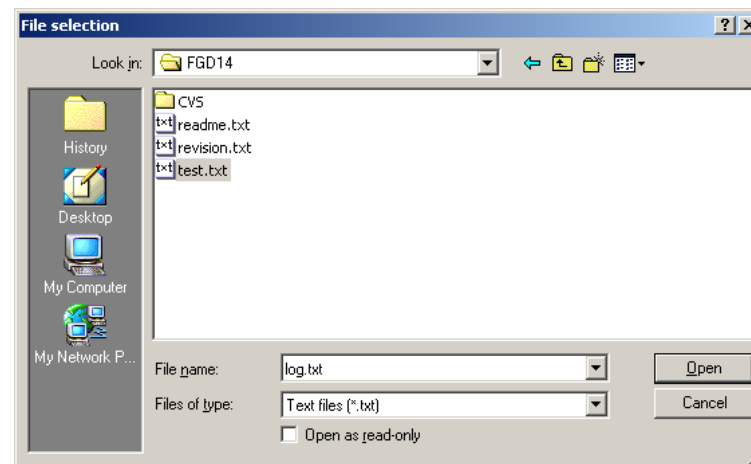
- 1) file name
- 2) logging interval
- 3) comm. port

5.6.1 File selection

The filename can be either entered directly in the File name text box or by selecting the file from a list using the **File | Open** facility, i.e.



The following screen will appear:



Select a path, folder then enter a file name.

Note: only files that end with the 'txt' extension are allowed.



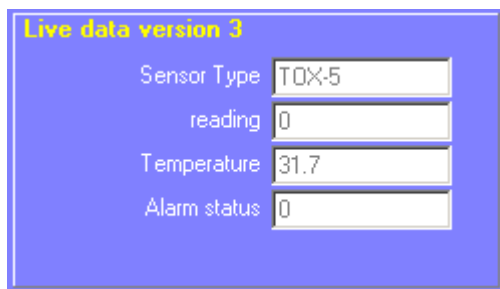
Note: Use this option with extreme caution; once the data has been transferred to the OEM module, it cannot be undone.

5.5 Live data

The **Live data | Read** option takes a snap shot of the current state of the FGD14 module.



A typical display is shown below:



Here the sensor type is IR-CO2P, 0-5000ppm CO₂.
The current gas reading is 0 ppm.
The sensor temperature is 32.2 °C.
The alarm status reflects the condition of the unit.



3.4.2 Zero

There are two zero functions within the FGD14, the instrument zero and the sensor zero. The sensor Zero can only be achieved internally.

3.4.2.1 Zero Instrument

This is a calibration feature. It allows the instrument to determine the sensor output under zero gas conditions.

- Apply target free gas to the sensor inlet and allow enough time for the sensor to respond and all gas to be purged (typically 2 minutes dependent upon flow rate).
- Select calibration mode **C: 1** (refer to section 3.2) and press ENTER.
- Press ENTER to perform the ZERO calibration. Pressing MENU instead of ENTER aborts the calibration (the ZERO factor will still be displayed on exit).
- Press MENU – the display will show the ZERO factor for the instrument before returning to its standard mode of operation.

The ZERO factor should be recorded on any calibration certificates.



3.4.2.2 Zero Sensor

Remove the 4 screws located at each corner of the instrument to gain access to the sensor calibration buttons within the unit.

Zero calibration of the sensor can be carried out by using the button on the circuit board as seen in Fig 1 below.

The Zero button only works when the FGD10B Infrared has been powered for a minimum of 10 minutes.

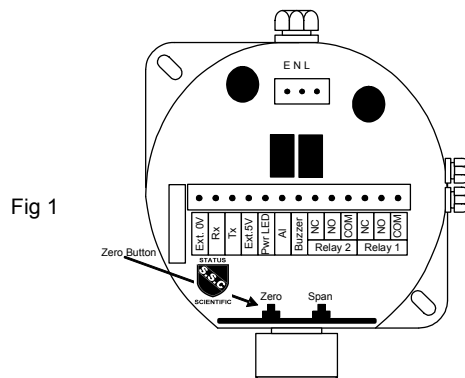


Fig 1

Ensure the sensor is in a zero-gas environment.

Carbon Dioxide sensors cannot be zeroed in air due to the background levels of CO₂ present. These sensors are best zeroed whilst being exposed to 100% nitrogen.

Where a purging gas has to be applied, use a flow rate of between 300 and 500cc/min. Allow sufficient time for the sensor to respond.

Press the Zero button and hold for a minimum of 5 seconds to zero the sensor.

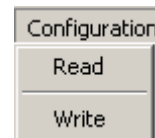
Note: the Instrument zero must be carried out after a sensor zero.



% Zero Suppression The range is 0 to 10% of FSD

5.4 Write Configuration data

Click on **Configuration | Write** to transfer the configuration data from the PC to the FGD14 module, i.e.

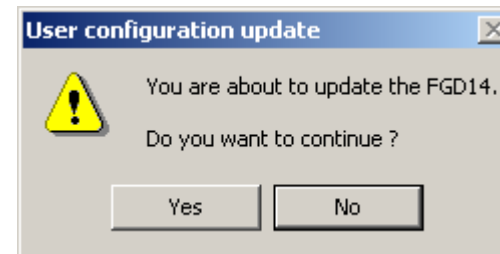


5.4.1 Configuration write warnings

When the configuration write option is selected the user entries for each entry is compared with pre-set limits. If any errors occur then the user is prompted with the following screen:



If the Yes option is selected then the following prompt is issued:





5.3.1 Configuration data

Version	config version type 0 –255 (this software supports version 3).	
Display mode	number of decimal places displayed.	
Bulb count	rate at which the sensor bulb flashes. The frequency is calculated as follows: Frequency = 1000 / (Bulb count * 40)	
Sensor type	CO2L	0-5% Volume
	CO2H	0-100% Volume
	CO2P	0-10000 ppm
	ACETONE	0-100% LEL acetone
	CH4L	0-5% Volume
	CH4H	0-100% Volume
	HC	0-100% LEL general Hydrocarbons
	HCC	0-100% LEL general Hydrocarbons
	HHC	0-100% Volume general Hydrocarbons
	HHCC	0-100% Volume general Hydrocarbons
	OXYGEN	0-25 % Volume
	TOX-1	0-1 ppm
	TOX-2	0-1 ppm
	TOX-3	0-20 ppm
	TOX-4	0-50 ppm
	TOX-5	0-200 ppm
	TOX-6	0-500 ppm
	TOX-7	0-1000 ppm
	TOX-8	0-9999 ppm
Sensor FSD	maximum gas level for selected sensor	
Sensor zero Active	AtoD counts at zero gas	
Sensor zero Reference	AtoD counts at zero gas	
Sensor Span	calibration factor at gas level	
EL	constant for linearisation	
Power term	linearisation factor	
Calibration gas level	gas level during calibration	
Cal temperature	sensor temperature during calibration	
Gas cross-reference	correction factor to convert from calibration gas to another gas	
Zero temp comp	zero compensation factor, expressed as constant per °C	
Span temp comp	span compensation factor, expressed as constant per °C	
Relay mode	Controls relays 1 & 2	
Alarm level 1	Relay 1 alarm setpoint	
Alarm level 2	Relay 2 alarm setpoint	
Hysteresis	% hysteresis for alarm levels	
Sounder	Sounder can be Off(-1), On (0) or timed(1-600 seconds)	
%Pos Zero Suppression	The range is 0 to 10% of FSD	

3.4.3 Span

There are two span functions within the FGD14, the instrument span and the sensor span. The sensor Span can only be achieved internally.

3.4.3.1 Span Instrument

This is a calibration feature. It allows the instrument to determine the sensor output when it is exposed to a know concentration of gas.

- Apply a known concentration of Hydrocarbon gas (typically 2.50% CO2) to the sensor inlet and allow enough time for the sensor to respond. i.e. until the reading remains constant.
- Select calibration mode **C: 2** (refer to section 3.2) and press ENTER.
- Using the UP and DOWN buttons, adjust the displayed reading so that it matches the calibration gas concentration.
- Press ENTER to perform the SPAN calibration. Pressing MENU instead of ENTER aborts the calibration (the SPAN factor will still be displayed on exit).
- Press MENU – the display will show the SPAN factor for the instrument before returning to its standard mode of operation.

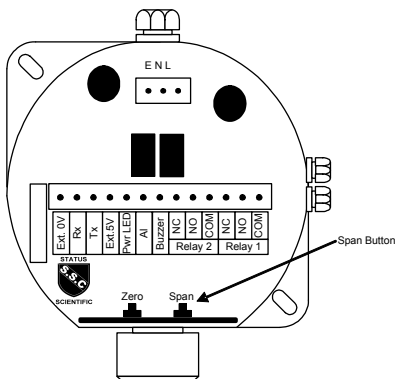
The SPAN factor should be recorded on any calibration certificates.



3.4.3.2 Span Sensor

Always zero the sensor prior to performing a span operation.

Fig 2



Apply a known concentration of gas (applicable to sensor type) at a flow rate of between 200 and 500cc/min. Allow time for the sensor to respond. Press the Span button and hold for a minimum of 5 seconds to span the sensor.

Turn off and disconnect the calibration gas.

Note: The calibration gas level must match with the level stored in the sensor. If the gas level is does not match then the sensor must be updated with specialized equipment.

Note: the Instrument span must be carried out after a sensor span.

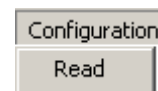


Note: clicking on Enable repeatedly will enable / disable the port. When the port is enabled the status bar at the bottom of the screen will reflect the user settings, i.e.

Settings: 19200,n,8,1

5.3 Read Configuration data

Click on the **Configuration | Read** to transfer the internal configuration data for viewing on the PC, i.e.



After successful data transfer the data will be seen typically as follows:

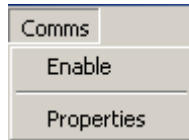
Configuration data version 3

Display mode	1234	Gas cross reference	1
Bulb count	0	Zero temp. comp.	0.00000
Sensor type	TOX-5	Span temp. comp.	0.00000
Sensor FSD	200	Relay 1 mode	E:R
Sensor zero Active	191	Relay 2 mode	E:R
Sensor zero reference	192	Alarm level 1	50.00
Sensor Span	0.500	Alarm level 2	100.00
EL	-0.0001000000	Sounder time (secs)	0n
Power term	0.0000000000	% Alarm hysteresis	1.00
Calibration gas level	100.00	%pos zero suppression	0
Cal. temperature	31.6	%neg zero suppression	5

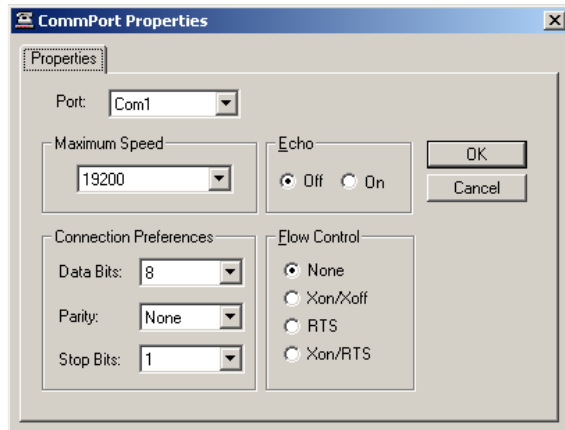


5.2.1 Comm port selection

The user must select the serial port that the FGD14 module is connected to before any communications can commence. Select **Comms | Properties** as seen below:



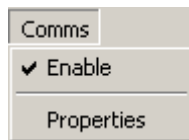
The following screen is shown:



Click on the Port: drop down arrow and select the comm port that is being used, here Com1 is selected.

Note: do not change any other option.

Now enable the selected port, click on **Comms | Enable** as follows:



3.4.4 Set Instrument FSD

This option is used to match the sensor's operating range with the electronics so that over-range conditions can be detected.

- Select calibration mode **C: 3** (refer to section 3.2) and press ENTER.
- Using the UP and DOWN buttons, adjust the displayed reading so that it matches the desired FSD.
- Press ENTER to accept the new FSD. Pressing MENU instead of ENTER aborts the feature.
- Press MENU to return the instrument to its standard mode of operation.

3.4.5 Set Display Mode

Menu mode **C: 6**

- Select calibration mode **C: 6** (refer to section 3.2) and press ENTER.
- Using the UP and DOWN buttons, adjust the display to match the number of decimal places required.
- Press ENTER to accept the new setting. Pressing MENU instead of ENTER aborts the feature.
- Press MENU to return the instrument to its standard mode of operation.

Note: increasing the display resolution will not make the sensor more accurate.



3.4.6 Display Firmware Version

Menu mode **C: 7**

This option is not available in this version – it is used for compatibility with other products.

3.4.7 Restore

This feature is used to restore all the settings to the factory default settings. **Warning all current settings and sensor calibration will be lost – use with extreme caution**

The information that can be displayed using this feature is usually only required during initial assembly and testing of the detector head

- Select calibration mode **C: 8** (refer to section 3.2) and press ENTER.
- The display will show Elt1.
- Press UP to select the different types of sensor.
- Press ENTER to restore the factory default settings for the selected sensor type. Pressing MENU instead of ENTER leaves the unit without change.
- Press MENU to return the instrument to its standard mode of operation.

3.4.7.1 Sensor types

MENU	TYPE	RANGE	COMMENTS
HC	Infrared	0-100%LEL	General hydro carbons
CO2L	Infrared	0-5%Vol	Carbon Dioxide
CO2A	Infrared	0-2%Vol	Carbon Dioxide
CH4L	Infrared	0-100%LEL	Methane
CH4H	Infrared	0-100%Vol	Methane
Elt1	Oxygen	0-25%Vol	
Elt2	Toxic	0-1ppm	Positive output sensor
Elt3	Toxic	0-1ppm	Negative output sensor
Elt4	Toxic	0-20ppm	
Elt5	Toxic	0-50ppm	
Elt6	Toxic	0-200ppm	
Elt7	Toxic	0-500ppm	
Elt8	Toxic	0-1000ppm	
Elt9	Toxic	0-9999ppm	

Note: ELt1 should be used for use with the Premier Infrared sensor. The sensor FSD should be changed to match the sensor, in the case of the 0-5% v/v CO2 sensor the setting should be 5.



5 PC COMMUNICATIONS SOFTWARE

The software is designed to run under Microsoft Windows 9x, NT operating systems.

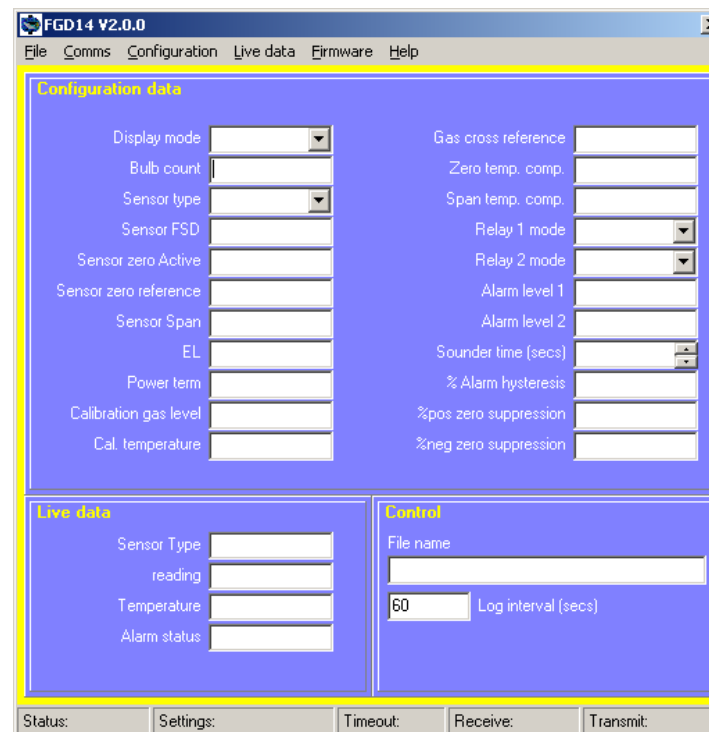
5.1 Software installation

Insert the CD into the 'D' drive. Click on the **start** button, then click **run** Type D:\setup.exe and press **Enter**. Note: 'D' is the letter for the CDrom drive.

Follow the on screen instructions.

5.2 PC Software

Run the program by selecting Start, Programs then 'FGD14 V2.0.0.exe', the following window will appear:





4 TROUBLE SHOOTING

The 'FGD14' Infrared detectors have been extensively tested and have been found to provide reliable monitoring of Carbon dioxide gas levels.

Any problems encountered by customers are usually the result of:

- Failure to adhere to recommended calibration procedures.
- Failure to ZERO the sensor in gas free atmospheres, or insufficient purge times allowed.
- Sensor aperture obstructions
- Power supply requirements not met.
- Genuine alarms as a result of gas being present.



3.4.8 View Engineer/Diagnostics Data

This feature is a *view-only* feature. No configuration changes are possible from within this menu.

This information is for the use of Status Scientific Controls.

- Select calibration mode **C: 9** (refer to section 3.2) and press ENTER.
- The display will alternate between the current value and code **C: 9x**: where x is:

0	Sensor gas reading.
1	Not applicable to this instrument.
2	Not applicable to this instrument.
3	Sensor output AtoD counts.
4	Not applicable to this instrument.
5	Not applicable to this instrument.
- The mode of operation can be selected by pressing the UP button.
- Press MENU to return the instrument to its standard mode of operation.

3.4.9 Sensor Frequency

Menu mode **C: 10**

This option has no effect in this version – it is used for compatibility with other products.

3.4.10 Cross Reference

Menu mode **C: 12**

This option has no effect in this version – it is used for compatibility with other products.



3.4.11 Set Relay 1 Mode

The unit is fitted with a relay that is operated in conjunction with the alarm level. The user can select if the relay is normally energised, 'E' or normally de-energised, 'd' when the unit is **not** in an alarm condition.

- Select calibration mode **C: 13** (refer to section 3.2) and press ENTER.
- The display will show the following:
 - E:r Normally energized, rising alarm
 - d:r Normally de-energized, rising alarm
 - E:F Normally energized, falling alarm
 - d:F Normally de-energized, falling alarm
- The mode of operation can be changed by pressing the UP button.
- Press ENTER to accept the new relay mode of operation. Pressing MENU instead of ENTER leaves the unit without change.
- Press MENU to return the instrument to its standard mode of operation.

3.4.12 Set Relay 2 Mode

The unit is fitted with a relay that is operated in conjunction with the alarm level. The user can select if the relay is normally energized, 'E' or normally de-energised, 'd' when the unit is **not** in an alarm condition.

- Select calibration mode **C: 14** (refer to section 3.2) and press ENTER.
- The display will show the following:
 - E:r Normally energized, rising alarm
 - d:r Normally de-energized, rising alarm
 - E:F Normally energized, falling alarm
 - d:F Normally de-energized, falling alarm
- The mode of operation can be changed by pressing the UP button.
- Press ENTER to accept the new relay mode of operation. Pressing MENU instead of ENTER leaves the unit without change.
- Press MENU to return the instrument to its standard mode of operation.

3.6 Sensor Replacement

Status Scientific Controls field service personnel, or a trained engineer should only perform sensor replacement. Consult Status Scientific Controls for further details.

Following sensor replacement: -

- A full calibration must be performed.



Fault Condition

If the instrument detects a fault with the sensor or the configuration data, a fault is raised. This is indicated by:

The RED LED on the front panel of the FGD14 flashes and the display flashes Fxxx, where xxx is a fault code as follows

1	checksum
2	sensor zero negative drift
4	sensor zero
8	sensor span
16	sensor reference low
32	sensor ref high
64	sensor detector high

The RED and GREEN LED's on the Remote Indicator Unit flash alternately.

High Condition

If the instrument detects a gas level in excess of the FSD (+10%) then the display alternates between 'Hi' and the measured gas level, an alarm condition will be indicated.



3.4.13 Set Alarm Level 1

- Select calibration mode **C: 15** (refer to section 3.2) and press ENTER.
- Using the UP and DOWN buttons, adjust the displayed reading so that it matches the desired alarm set point.
- Press ENTER to accept the new alarm level. Pressing MENU instead of ENTER aborts the feature.
- Press MENU to return the instrument to its standard mode of operation.

3.4.14 Set Alarm Level 2

- Select calibration mode **C: 16** (refer to section 3.2) and press ENTER.
- Using the UP and DOWN buttons, adjust the displayed reading so that it matches the desired alarm set point.
- Press ENTER to accept the new alarm level. Pressing MENU instead of ENTER aborts the feature.
- Press MENU to return the instrument to its standard mode of operation.

3.4.15 Sounder Enable

The sounder has three modes of operation:

Always off
Always on
Timed.

The display shows OFF, On or a number between 1 and 600. The timed mode is in seconds.

This option is used to enable or disable the sounder. Note the Leds and display operate normally.

- Select calibration mode **C: 26** (refer to section 3.2) and press ENTER.
- Set the option to OFF, On or timed by pressing the UP / DOWN buttons.
- Press ENTER to accept the change. Pressing MENU instead of ENTER aborts the feature.
- Press MENU to return the instrument to its standard mode of operation.



3.4.16 Set Alarm Hysteresis

Hysteresis is applied during alarm checking to stop the alarm relays chattering when the gas level is at the alarm set point. The hysteresis level is expressed as a percentage of the alarm setting. For example if the alarm setting is 1.0% vol. CO₂ and the hysteresis setting is 1% then the alarm relay would be activated at 1.0% gas and de-activate at 0.9% gas.

- Select calibration mode **C: 27** (refer to section 3.2) and press ENTER.
- Using the UP and DOWN buttons, adjust the displayed reading so that it matches the desired alarm hysteresis level.
- Press ENTER to accept the new level. Pressing MENU instead of ENTER aborts the feature.
- Press MENU to return the instrument to its standard mode of operation.



3.5 'FGD14' Indications

Start up Conditions

The FGD starts up with the following conditions:

The GREEN power led on the remote indicator flashes.

The LCD shows:

All segments.

Firmware version.

Sensor type.

'----' flashes for remaining start up time.

The GREEN power led on the remote indicator is continuously lit.

Alarm Condition

If the FGD14 detects gas levels in excess of the preset alarm level, an alarm is raised. This is indicated by:

The RED LED on the front panel of the FGD14 flashes and the sounder will be heard.

The RED LED on the Remote Indicator Unit flashes and the sounder will be heard.

The internal Relay will change state.

The alarm condition will continue to be indicated until the detected gas level falls below the alarm set point.